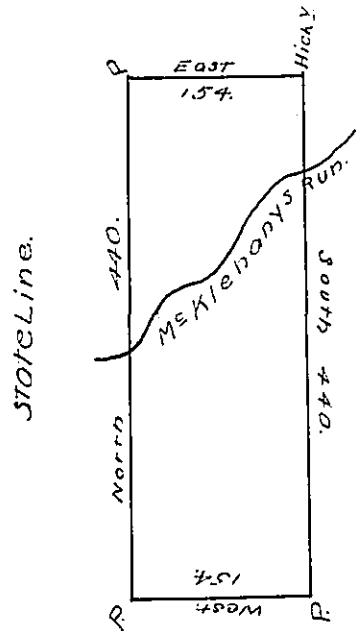




103

Doc. John Redman.



The above is the draught of a Survey made April 16<sup>th</sup> 1795 in pursuance of a Warrant granted to John Redman on the 14<sup>th</sup> day of April 1792. Situate Northwest of the Ohio river on the Waters of Beaver Creek — ~~adjoining land granted to~~ — called Berger. containing 399 Acres and 80 perches with the usual allowance of 6 p<sup>ct</sup> Cent &c.

Jno Hoge D.S.

Daniel Brodhead Esq. S.G.

IN TESTIMONY that the above is a copy of the original remaining on file in the Department of Internal Affairs of Pennsylvania, made conformably to an Act of Assembly approved the 16th day of February, 1833, I have hereunto set my Hand and caused the Seal of said Department to be affixed at Harrisburg, this twenty fifth day of August 1906

*Isaac B. Brown*  
 Secretary of Internal Affairs.